

| | | |
|--------------|----------|---|
| SANYO | No.3462A | <h1 style="margin: 0;">2SK1459</h1> <p style="margin: 0;">N-Channel Silicon MOSFET</p> <h2 style="margin: 0;">Ultrahigh-Speed Switching Applications</h2> |
|--------------|----------|---|

Features

- Low ON-state resistance.
- Ultrahigh-speed switching.
- Micaless package facilitating mounting.

Absolute Maximum Ratings at Ta = 25°C

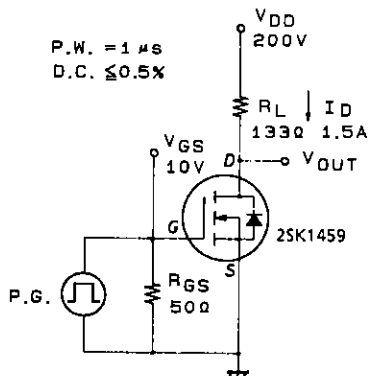
| | | | |
|-----------------------------|-----------|----------------------------|----------------|
| Drain-to-Source Voltage | V_{DSS} | | 900 V |
| Gate-to-Source Voltage | V_{GSS} | | ±30 V |
| Drain Current(DC) | I_D | | 2.5 A |
| Drain Current(Pulse) | I_{DP} | PW ≤ 10μs, duty cycle ≤ 1% | 5 A |
| Allowable Power Dissipation | P_D | | 2.0 W |
| | | Tc = 25°C | 30 W |
| Channel Temperature | T_{ch} | | 150 °C |
| Storage Temperature | T_{stg} | | -55 to +150 °C |

Electrical Characteristics at Ta = 25°C

| | | | min | typ | max | |
|---|---------------|--|-----|-----|------|----|
| D-Source Breakdown Voltage | $V_{(BR)DSS}$ | $I_D = 1mA, V_{GS} = 0$ | 900 | | | V |
| Zero-Gate Voltage Drain Current | I_{DSS} | $V_{DS} = 900V, V_{GS} = 0$ | | | 1.0 | mA |
| Gate-to-Source Leakage Current | I_{GSS} | $V_{GS} = \pm 30V, V_{DS} = 0$ | | | ±100 | nA |
| Cutoff Voltage | $V_{GS(off)}$ | $V_{DS} = 10V, I_D = 1mA$ | 2.0 | | 3.0 | V |
| Forward Transfer Admittance | $ Y_{fs} $ | $V_{DS} = 20V, I_D = 1.5A$ | 0.8 | 1.5 | | S |
| (Static Drain-to-Source ON-State Resistance | $R_{DS(on)}$ | $I_D = 1.5A, V_{GS} = 10V$ | | 4.7 | 6.0 | Ω |
| Input Capacitance | C_{iss} | $V_{DS} = 20V, f = 1MHz$ | | 350 | | pF |
| Output Capacitance | C_{oss} | $V_{DS} = 20V, f = 1MHz$ | | 150 | | pF |
| Reverse Transfer Capacitance | C_{rss} | $V_{DS} = 20V, f = 1MHz$ | | 100 | | pF |
| Turn-ON Delay Time | $t_{d(on)}$ | $I_D = 1.5A, V_{GS} = 10V$ $V_{DD} = 200V, R_{GS} = 50\Omega$ | | 15 | | ns |
| Rise Time | t_r | | 25 | | ns | |
| Turn-OFF Delay Time | $t_{d(off)}$ | | 120 | | ns | |
| Fall Time | t_f | | 40 | | ns | |
| Diode Forward Voltage | V_{SD} | $I_S = 2.5A, V_{GS} = 0$ | | | 1.8 | V |

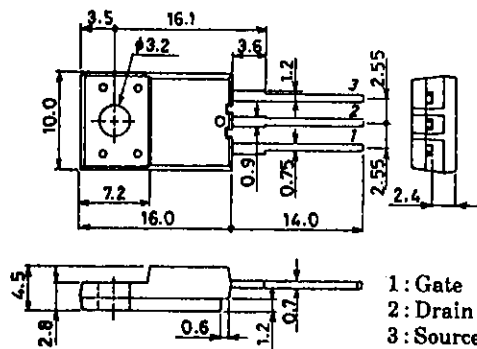
(Note) Be careful in handling the 2SK1459 because it has no protection diode between gate and source.

Switching Time Test Circuit



Package Dimensions 2078B

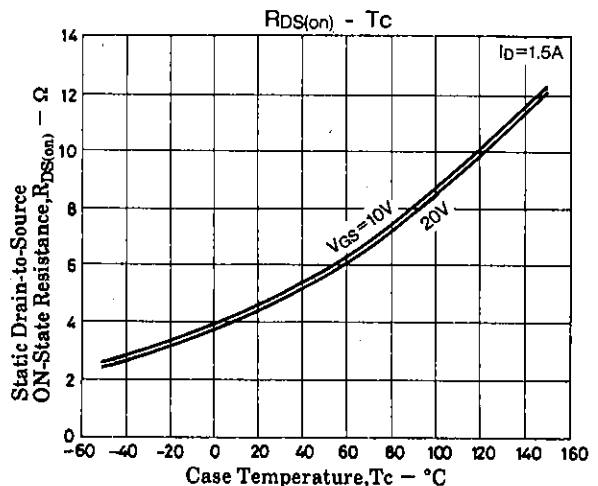
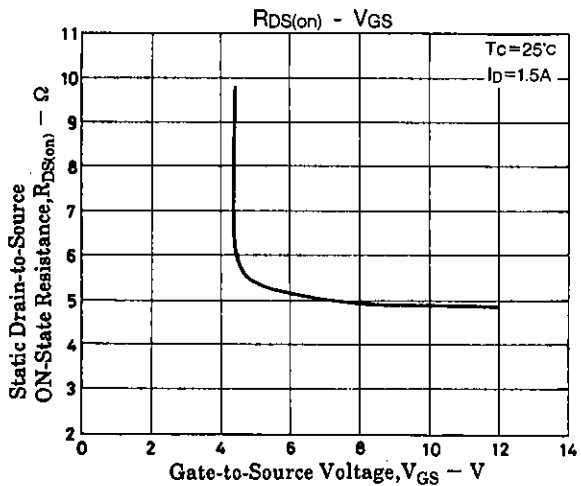
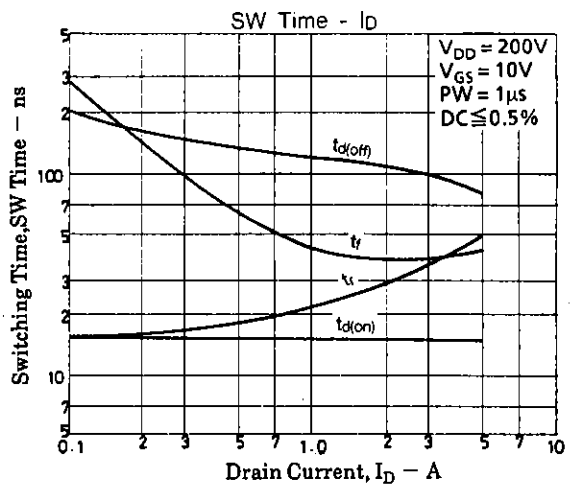
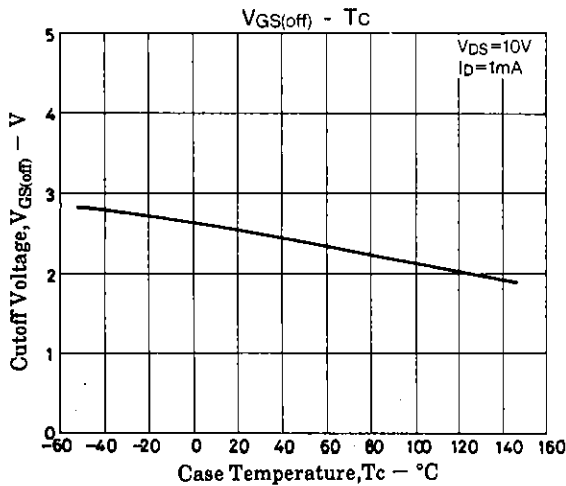
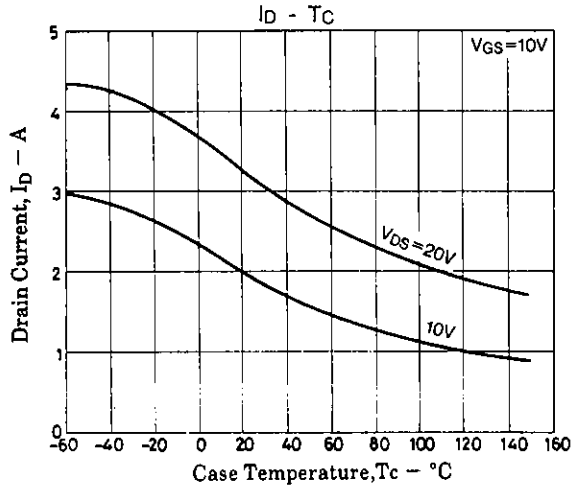
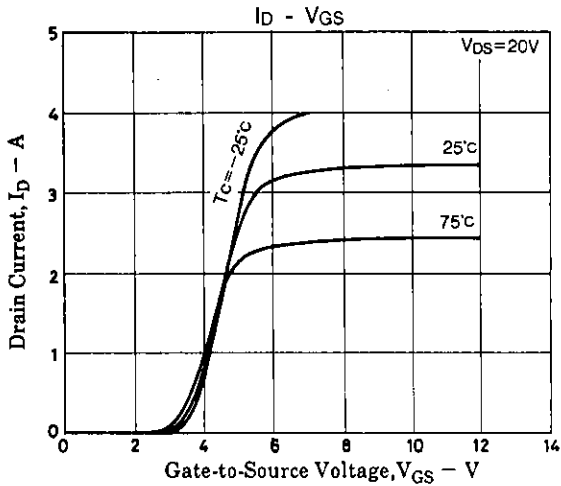
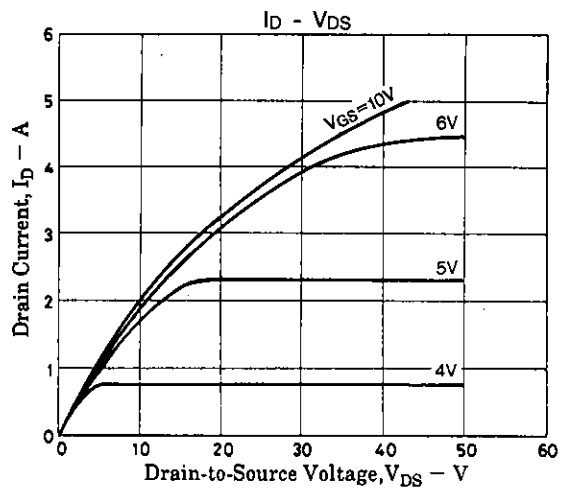
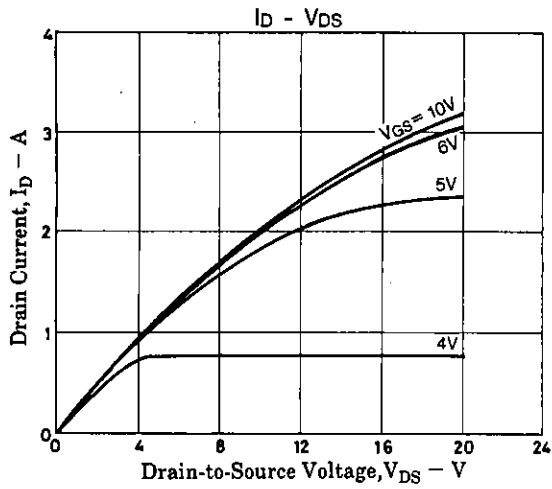
(unit : mm)

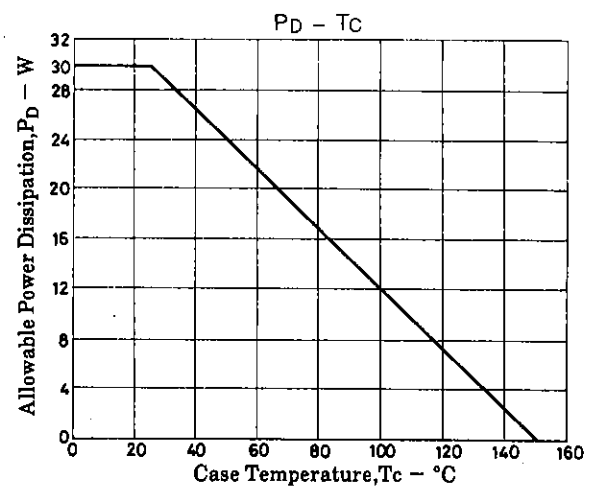
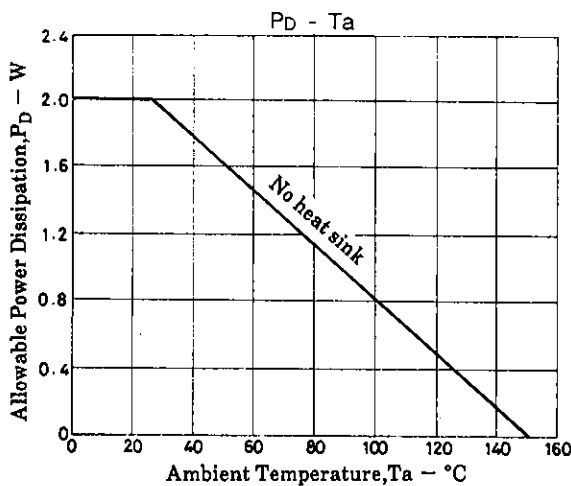
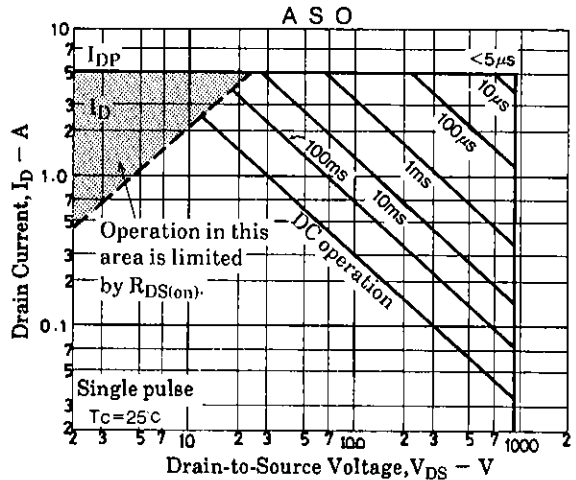
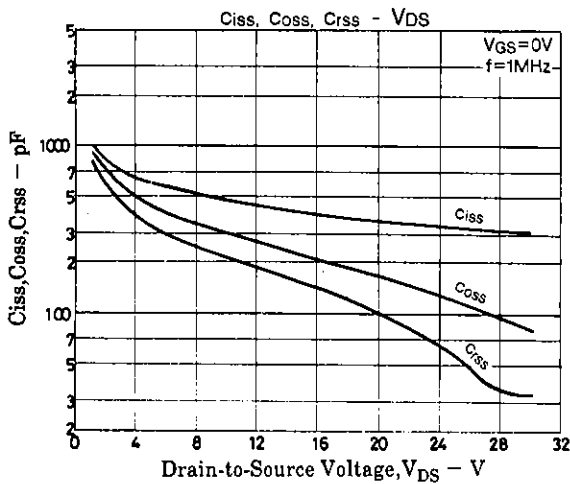
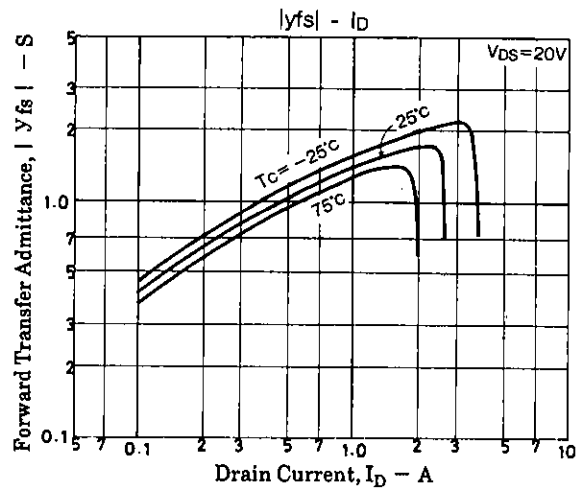
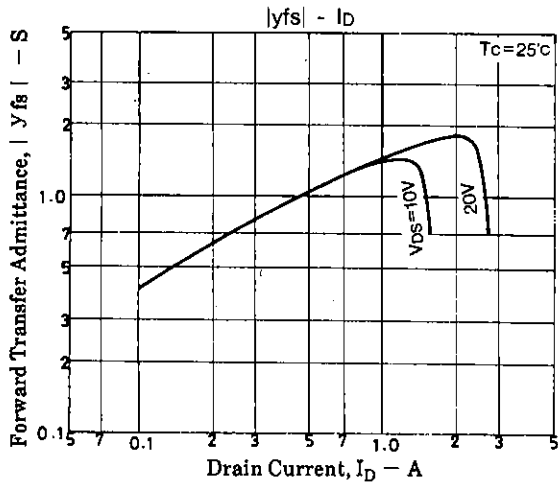


- 1: Gate
- 2: Drain
- 3: Source

SANYO : TO-220FI(LS)

SANYO Electric Co., Ltd. Semiconductor Business Headquarters
 TOKYO OFFICE Tokyo Bldg., 1-10, 1 Chome, Ueno, Taito-ku, TOKYO, 110 JAPAN





■ No products described or contained herein are intended for use in surgical implants, life-support systems, aerospace equipment, nuclear power control systems, vehicles, disaster/crime-prevention equipment and the like, the failure of which may directly or indirectly cause injury, death or property loss.

■ Anyone purchasing any products described or contained herein for an above-mentioned use shall:

- ① Accept full responsibility and indemnify and defend SANYO ELECTRIC CO., LTD., its affiliates, subsidiaries and distributors and all their officers and employees, jointly and severally, against any and all claims and litigation and all damages, cost and expenses associated with such use;
- ② Not impose any responsibility for any fault or negligence which may be cited in any such claim or litigation on SANYO ELECTRIC CO., LTD., its affiliates, subsidiaries and distributors or any of their officers and employees jointly or severally.

■ Information (including circuit diagrams and circuit parameters) herein is for example only; it is not guaranteed for volume production. SANYO believes information herein is accurate and reliable, but no guarantees are made or implied regarding its use or any infringements of intellectual property rights or other rights of third parties.

This catalog provides information as of July, 1997. Specifications and information herein are subject to change without notice.

This datasheet has been download from:

www.datasheetcatalog.com

Datasheets for electronics components.